



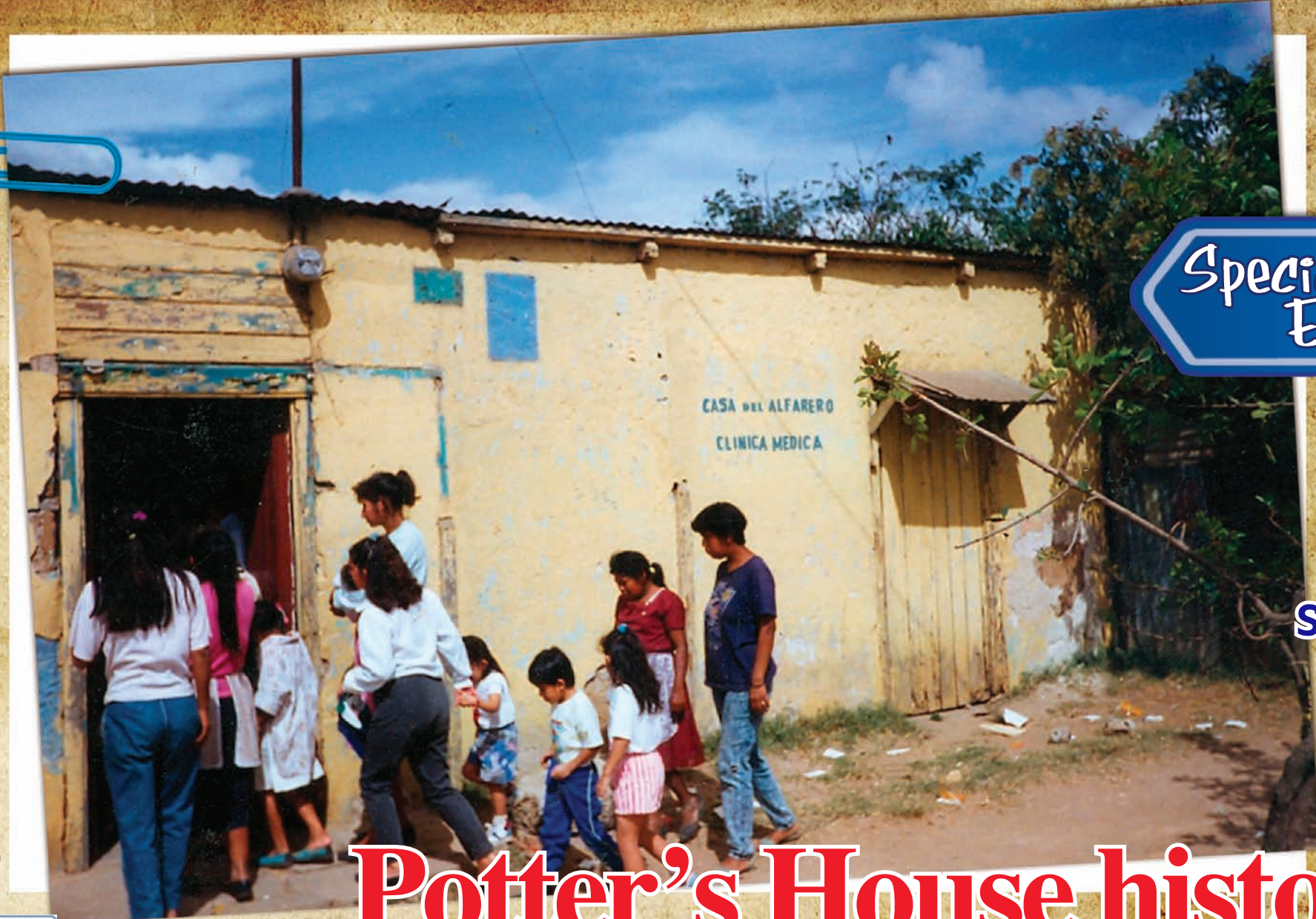
Potter's House
 Association International
 "Valuing the Scavengers as Treasures"

January, 1989 - Kids Bible Club

November, 1990 - First Kids Camp

Year 1993
 Purchase of the Land

The front of Potter's House building in 1993, the wall was made of adobe and corrugated metal. In this photo, Treasures are coming to the medical clinic.



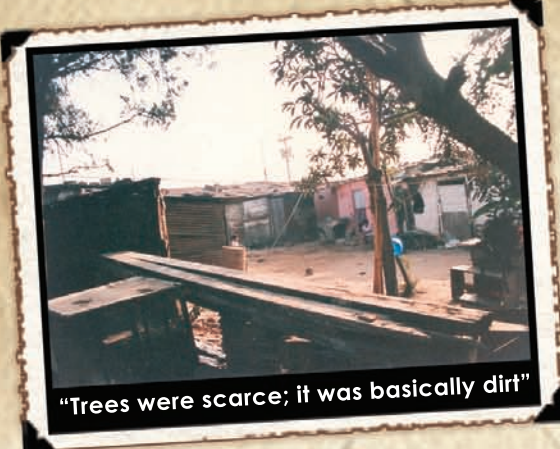
Special Edition



Potter's House history



The Land: Awaiting a sign from God



In 1993, the Potter's House ministry was flourishing, and friends encouraged Gladys and Lisbeth to find property near the garbage dump where they could regularly serve the community. Real estate prices were quite high, and some ministry partners were hesitant to make such a significant

commitment. "When purchasing property was suggested, I initially didn't like the idea, because I was concerned about the level of commitment required. I was praying not to find a property," Gladys recalls. They believed that if a suitable property was found, it would be a sign from God that Potter's House was truly in His heart and will.

Potter's House staff members ultimately found affordable property 490 feet from the garbage dump, making them more accessible to the children they sought to serve! Gladys says, "When we found the property, I considered it a sign that God wanted me to work for Potter's House full time." Sonia, one of the children who participated in the many activities that Potter's House offered, recalls, "I remember that, after we prayed for a new property near the dump, the Lord answered and we stopped meeting in the place where we used to meet."

Potter's House staff members were thankful for God's provision, but the new property needed much work. It was 128 feet by 60 feet with only 2 rat- and fly-infested rooms made of adobe and corrugated metal. "Trees were scarce; it was basically dirt," says Sonia. The existing facility had neither running water nor bathrooms. Sonia adds, "If you needed to use the bathroom, you had to wait until you got back home."



Presented with this barren land, God's servants were called to intensify their commitment, providing greater service opportunities for staff members, volunteers, and supporters.

Eventually, new but simple facilities were built, making it possible for Potter's House staff members and volunteers to reach out to more children and adults whose homes were literally in the landfill. Children continued to learn about Jesus and the Bible in this new facility. Sonia has happy memories of those days. "I remember that we sat on long pieces of wood, like benches. These were set on top of cement blocks and that was where we sat while we listened to the Bible lessons. We always had a snack when we met: bread and ham. There was always a drink and some cookies as well. I also remember playing with toys and dolls. And we had piñatas for birthday celebrations." Many people, like Sonia, fondly remember the great fun they had while learning about Jesus' love for them.



Thanks to God's faithfulness to the Potter's House ministry, Sonia and more than 200 children grew up with hope for a better future, knowledge of the existence of a faithful God, and the promise of eternal life for those who believe in Christ. "I have been able to share God's Word with my children," says Sonia. She is thankful that Potter's House made it possible for her to see life in a much broader way; but she is most grateful for the opportunity to know God and to share Him with her children.

Edgar & Gladys
Directors

"If the LORD is pleased with us, he will lead us into that land, a land flowing with milk and honey, and will give it to us." Numbers 14:8

**Ways to share
your tax-deductible
gifts**

**Secure
On-Line Donations**

Go to:
www.pottershouse.org.gt

Checks

Payable to:
Potter's House Association Int'l
P.O. Box 106, Dept. A
Pewaukee, WI 53072-0106 USA

**Electronic Bank
Transactions**

Contact:
donorservices@pottershouse.org.gt
Call toll-free 888-742-4828
888-PHA-GUAT

Read more on our web page:
pottershouse.org.gt/25anniversary

